

# option 1 - Fixing with a Frame Kit (sold separately)

## Tools

Tape measure  
Marker pen  
Power drill  
9mm drill bit for screw hole caps  
4mm drill bit to suit the thread of the screws  
Screwdriver  
Hacksaw\*  
Wood saw\*

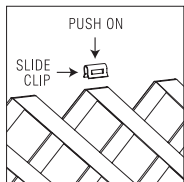
\*Only required when reducing the length of the frame channels and the size of the lattice sheets.

Note: Screws are not supplied, you will need to purchase appropriate screws to suit the material to which you are attaching the lattice. Use screws with a maximum head diameter of 9mm and a thread diameter of 4mm.

## Preparation

- 1 Ensure that the support structure on which you are mounting the lattice is braced and all joints are secure.
- 2 If the surface of the structure is not flat, fit spacers to it at frame mounting points.
- 3 Clear an area on which to lay the lattice during assembly of the frame.
- 4 Measure the space available for installation of the framed lattice sheet. If the available space is smaller than 2455mm x 1245mm, reduce the size of the sheet and the frame to fit by cutting with a saw.

Note: The frame channels are pre-cut to ensure that the lattice sheet has room for expansion and contraction. **When reducing the size of the sheet, ensure the frames (channels) are reduced by the same amount.**



## Mounting Kit contents:

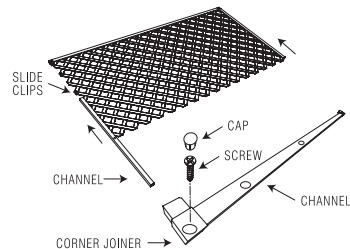
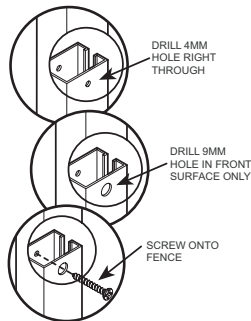
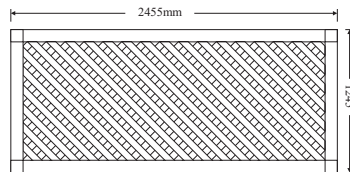
### (sold separately)

Two (2) 2.383m channels  
Two (2) 1.173m channels  
Four (4) corner joiners  
Eleven (11) push-on slide clips  
Sixteen (16) screw hole caps

## Installation

- 1 Fit the push-on slide clips ONLY to BOTH SIDES and TOP of each lattice sheet approximately 500mm apart. Do not fit slide clips to the bottom edge of the lattice or closer than 100mm to a corner.
- 2 Once all the slide clips are fitted, slide the channel along the top edge of the lattice, ensuring that all slide clips are captured within the channel. Fit corners to the top channel.
- 3 Slide the side channels up to the top corners, ensuring that all slide clips are captured within the channel.
- 4 Fit corners to the bottom channel. Fit bottom channel to frame to complete assembly.
- 5 Lift the framed lattice and place in position on the supporting structure. Fasten the frame to the supporting structure through the holes in the corners. Two people will be required to do this as the frame lattice is heavy.
- 7 Fasten with appropriate screws against the rear surface of the channels only. Fit screw hole caps to finish the installation.

Note: To increase the life of your frame, we recommend drilling a minimum of 3 holes to allow water to drain out of the bottom channel.



X = SLIDE CLIPS

